

**TARGUS**  
Essential Accessories for Mobile Computing

**Targus Click N Type**  
for Toshiba Pocket PC



**USER'S GUIDE**  
*Making Your Mobile Life Easier.*

**TARGUS**  
Essential Accessories for Mobile Computing

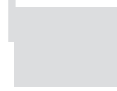
**Making Your Mobile Life Easier.**

Visit our Web site at: [www.targus.com](http://www.targus.com)

Features and specifications are subject to change without notice. © 2002 Targus Corp.

400-0097-001A

BRUSSELS HANNOVER BARCELONA TOKYO MILANO AMSTERDAM SINGAPORE LONDON PARIS NEW YORK LOS ANGELES TORONTO HONG KONG SYDNEY

 PMS Black  
15%

 PMS Black  
100%

# Targus Click N Type

Congratulations on your purchase of the Targus Click N Type. The Click N Type is a convenient and ultra-portable keyboard and mouse for your PDA.

With the Click N Type you can:

- Enter text directly into your PDA.
- Use the 8-way navigation button to simulate mouse movement.
- Take a keyboard and mouse with you whenever you travel with your PDA.

In addition to this user's guide, this package contains the Targus Click N Type and the driver software CD-ROM.

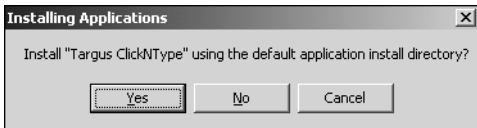
## Installing the Driver

To install the driver software for the Click N Type, you need:

- A desktop or notebook computer with the Windows® 95/98/Me/2000/XP or Windows NT® 4.0 operating system
- Microsoft® ActiveSync® 3.1 or higher on your computer (for copying files to your PDA). For the most current version of Microsoft ActiveSync, go to: <http://www.microsoft.com/mobile>
- At least 30K bytes of free memory on your PDA.

- 1 Connect your PDA to your computer, if it's not already connected, and synchronize to back up your files.
- 2 Disable any previously installed keyboard software on your PDA.
- 3 Insert the driver software CD-ROM into your computer's CD-ROM drive.
- 4 If setup doesn't begin automatically, click **Start, Run**, then enter D:\Setup.exe (where D: is the path of your CD-ROM drive) and then click **OK**.

The Installing Applications screen appears.



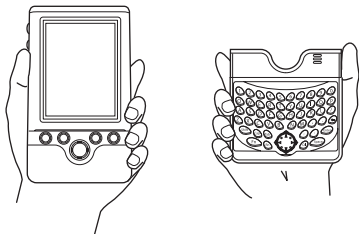
***Sample Installing Applications screen***

- 5 Click **Yes**.
- 6 Follow the on-screen instructions to complete installation.  
When installation is complete, the Click N Type icon appears in the Start Menu on your PDA. You can now connect the Click N Type to your PDA.

# Connecting the Click N Type to Your PDA

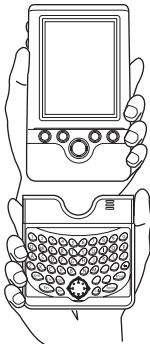
Once you have installed the driver, you can connect the Click N Type to your PDA. To do this:

- 1 Turn off your PDA (if it's turned on).
- 2 Hold your PDA in one hand and the Click N Type in your other hand.



***Holding your PDA and the Click N Type***

- 3 Align your PDA with the keyboard connector, located at the top of the Click N Type.



***Aligning your PDA with the keyboard connector***

- 4 Gently slide your PDA into the keyboard connector until you hear a “click.”



**CAUTION:** Always use the keyboard connector as a guide when connecting and disconnecting your PDA to avoid possible damage to your device or the Click N Type.

## Disconnecting the Click N Type

To disconnect the Click N Type from your PDA:

- 1 Turn off your PDA (if it's turned on).
- 2 Press the eject buttons, located on either side of the keyboard, and gently pull your PDA away from the Click N Type, sliding it out of the keyboard connector.

## Using the Click N Type



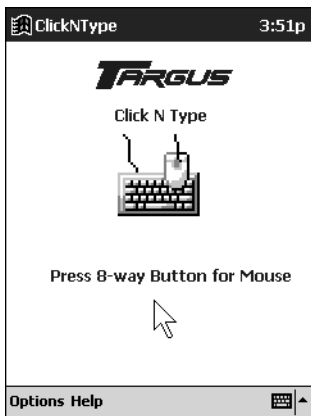
NOTE: The Click N Type does not require batteries. Instead, it runs off of a small amount of power, which it draws directly from your PDA.

## Enabling the Click N Type

After installing the driver and connecting the Click N Type to your PDA, you can enable the keyboard through the main application screen.

To enable the Click N Type, tap **Start**, then **Click N Type**.

The main application screen appears and you are now ready to customize and use the Click N Type.



***Sample main application screen***

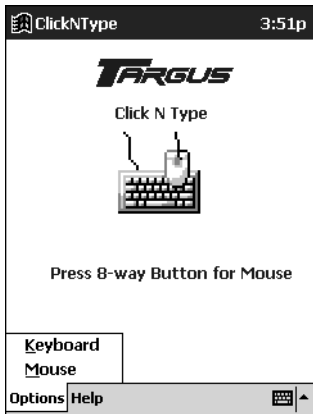
## Customizing the Click N Type Options

Once you enable the Click N Type, you can view and customize its options through the Options menu on the main application screen.

To customize the Click N Type options:

- 1 Tap **Start**, **Click N Type**, then **Options**.

The Options menu appears.



***Sample main application screen, Options menu***

- 2 Select the option you want to view or customize.



**NOTE:** To access the About and Help options, tap **Help** instead of Options on the main application screen.

The available options are:

- About                      Shows the software version and copyright
- Help                         Lists the online Help topics
- Keyboard                 Specifies the keyboard repeat rate settings
- Mouse                      Specifies the mouse speed settings

## **About**

The About screen allows you to view the software version and copyright information. To access the About screen, from the Click N Type application, select **Help**, then **About**.

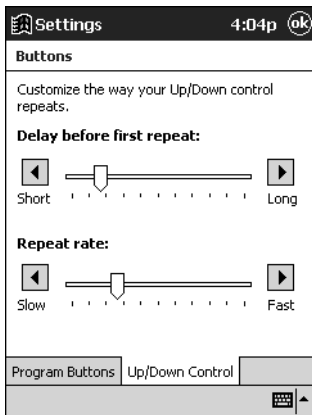
## **Help**

The Help screen displays the online help topics. To access the Help screen, from the Click N Type application, select **Help**, then **Help** again.

Find the topic you want to learn more about and select the link to view more information.

## (Keyboard) Buttons

The Buttons screen allows you to regulate the keystroke repeat function. To access the Buttons screen, select the **Up/Down Control** tab.



***Sample Buttons screen***

- **Delay before first repeat:** allows you to set the length of time before a letter, number or other character begins to repeat when you press and hold a key. The settings range is short to long.

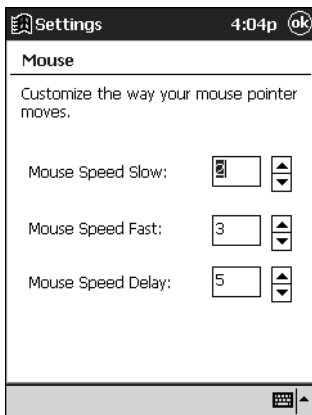
- **Repeat rate:** allows you to set the speed at which a letter, number or other character repeats when you press and hold a key. The settings range is slow to fast.



**NOTE:** The Program Buttons tab allows you to configure the PDA buttons only.

## Mouse

The Mouse screen in the Click N Type application allows you to regulate the rate at which the mouse (8-way navigation button) moves the cursor across the screen.



***Sample Mouse screen***

- **Mouse Speed Slow:** allows you to set the speed at which the cursor normally moves. The settings range is 1 (slow) to 5 (fast).
- **Mouse Speed Fast:** allows you to set the higher speed at which the cursor moves, after the speed delay, when you press and hold down the mouse button. The settings range is 1 (slow) to 5 (fast), but the corresponding speeds are faster than for Mouse Speed Slow.
- **Mouse Speed Delay:** allows you to set the length of time before the cursor changes from slow speed to fast speed when you press and hold down the mouse button. The settings range is 1 (short) to 10 (long).

## Using the Keyboard Mouse

With the Click N Type's 8-way navigation button, you can control the cursor's movement and tap items on your PDA's screen — all “stylus-free.”



***Click N Type 8-way navigation button***

Press the arrows on the navigation button to move the cursor across the PDA's screen. To "tap" an on-screen option, press the checkmark key on the Click N Type. To "tap and hold" an on-screen option, press and hold the checkmark key on the Click N Type.



**NOTE:** The mouse turns itself off after one second of non-operation or when you press any key on the Click N Type.

## Typing Keyboard Shortcuts

The following table details the key sequences you can use to access options and additional characters, and to issue commands to your PDA from the Click N Type.

To use these key sequences, hold down the Ctrl, Fn, or Shift key (as indicated) and then tap the second key listed in the table for the desired result.

To access the characters that are imprinted in red, press Fn + <key>.

### Keyboard Combinations

	Key Sequence	Result
1	Shift + any key	Enters uppercase character
2	Caps	Toggles between all upper or lowercase characters
3	Fn + any key	Activates the red symbol above a key
4	Shift + →	Highlights character to right of cursor

	<b>Key Sequence</b>	<b>Result</b>
5	Shift + ←	Highlights character to left of cursor
6	Fn + Mouse	Emulates the left/right and up/down arrows on a keyboard
7	Mouse	Moves the cursor in the same manor as a regular mouse
8	Ctrl + X	Cuts selected text
9	Ctrl + C	Copies selected text
10	Ctrl + V	Pastes cut or copied text
11	Ctrl + A	Selects all text
12	Ctrl + Z	Undoes last command
13	Ctrl + Backspace	Deletes word to left of cursor
14	Ctrl + Q	Close program
15	Ctrl + N	Opens a new document, if supported

## Troubleshooting

### **What should I do when I type on the keyboard and nothing happens?**

- Check that your PDA is charged.
- Make sure that your PDA is firmly connected to the Click N Type.
- Verify that the keyboard driver is installed on your PDA.

- Remove the keyboard driver and then reinstall it. To do this:
  - 1 Tap **Start, Settings** and select the **System** tab.
  - 2 Tap **Remove Programs** and select **Targus Click N Type**.
  - 3 Tap **Remove**, then **Yes**.
  - 4 Install the driver software, following the instructions in “Installing the Driver” on page 2.

### **Does the Targus Click N Type require batteries?**

No — the keyboard uses only a small amount of power, which it draws directly from your PDA. Alternately, you can charge your PDA while using the Click N Type by connecting the AC adapter that came with your PDA to the AC adapter port, located at the bottom of the keyboard.

### **What should I do if my PDA screen goes blank while I’m typing?**

To keep your PDA screen from turning off during use, turn off the backlight option. To do this:

- 1 From the Settings Menu, select **Power**.
- 2 Tap **Adjust backlight settings**.
- 3 Select **Turn off backlight** so that the check mark disappears.

# Technical Support

In the unlikely event that you encounter a problem with your Targus accessory, please contact our technical support team at:

Email: [techsupport@targus.com](mailto:techsupport@targus.com)

Internet: <http://www.targus.com/support.asp>

Our knowledgeable staff is also available to answer your questions through one of the following telephone numbers.

## US

Monday through Friday, 8:00 a.m. (08:00) to 8:00 p.m. (20:00)

Eastern time: 800-283-6325

## Canada

Monday through Friday, 9:00 a.m. (09:00) to 5:00 p.m. (17:00)

Eastern time: 888-827-4877

## Europe

Belgium	+32 0 02-717-2451
Denmark	+45 0 35-25-8751
France	+33 0 1-64-53-9151
Germany	+49 0 21-16-579-1151
Italy	+39 0 24-827-1151
Netherlands	+31 0 53-484-9470
Spain	+34 0 91-745-6221
Sweden	+46 0 8-751-4058
Switzerland	+41 0 1-212-0007
United Kingdom	+44 0 20-7744-0330
Eastern Europe & others	+31 0 53-484-9479

## Product Registration

For more efficient customer service and to activate the product's warranty, Targus recommends that you register your Targus accessory shortly after purchasing it.

To register your Targus accessory, go to:

**<http://www.targus.com/registration.asp>**

You will need to provide your full name, email address, phone number, and company information (if applicable).

## **Warranty**

Targus warrants this product to be free from defects in materials and workmanship for one year. If your Targus Targus Click N Type is found to be defective within that time, we will promptly repair or replace it. This warranty does not cover accidental damage, wear and tear, or consequential or incidental loss. Under no conditions is Targus liable for loss of, or damage to, a computer; nor loss of, or damage to, programs, records, or data; nor any consequential or incidental damages, even if Targus has been informed of their possibility. This warranty does not affect your statutory rights.

Warranty Registration at:

<http://www.targus.com/registration.asp>

## **Regulatory Compliance**

This device complies with Part 15 of the FCC Rules. Operation is subject to the following two conditions: (1) This device may not cause harmful interference, and (2) This device must accept any interference received, including interference that may cause undesired operation.

## **FCC Statement**

### **Tested to Comply**

This equipment has been tested and found to comply with the limits of a Class B digital device, pursuant to Part 15 of the FCC Rules. These limits are designed to provide reasonable protection against harmful interference in a residential installation. This equipment generates, uses, and can radiate radio frequency energy and if not installed and used in accordance with the instructions, may cause harmful interference to radio communications. However, there is no guarantee that interference will not occur in a particular installation.

If this equipment does cause harmful interference to radio or television reception, which can be determined by turning the equipment off and on, the user is encouraged to try to correct the interference by one or more of the following measures:

- Reorient or relocate the receiving antenna
- Increase the separation between the equipment and receiver
- Move the computer away from the receiver
- Connect the equipment into an outlet on a circuit different from that to which the receiver is connected.

Microsoft, Windows and ActiveSync are registered trademarks of Microsoft Corporation. All other trademarks are the property of their respective owners.