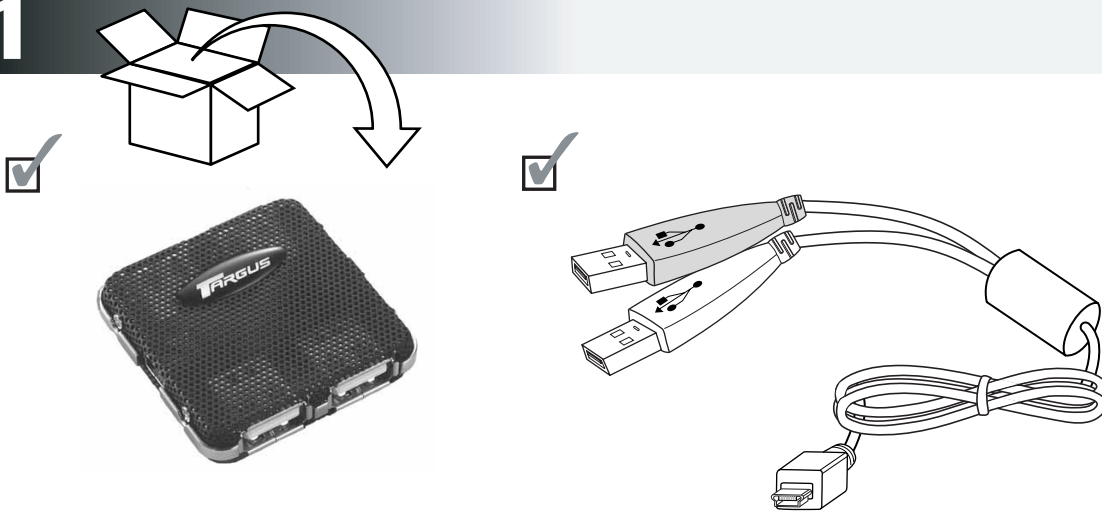


1

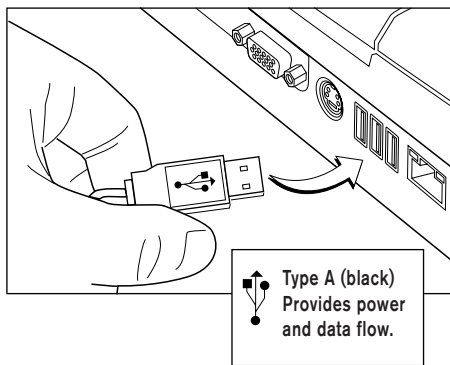
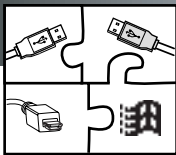


Démarrage Rapide

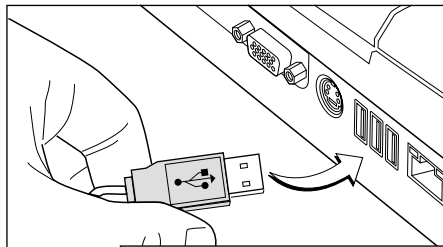
Schneller Anfang

Snel Begin

2



Type A (black)
Provides power and data flow.



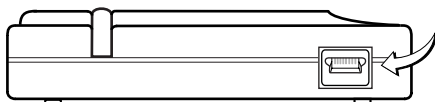
Type A (red)
Provides power only (optional).
Attach it when using high power devices via the hub.
When using high power devices, plug in both USB Type A connectors to the laptop/PC, then connect the high power USB device to the hub.

Inizio Rapido

Comienzo Rápido

Início Rápido

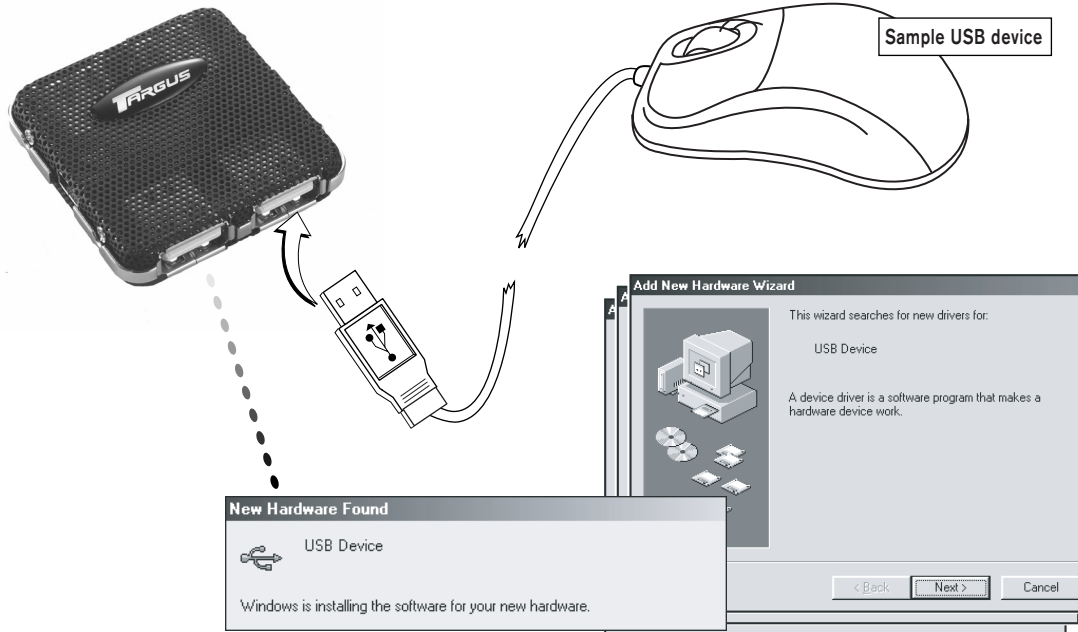
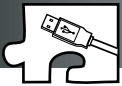
Sample hub



5-pin mini
5-pin ministecker
mini enchufe de 5 pines
mini-connecteur à 5 broches
5 pin mini
5-polige mini
mini de 5-pinos



3



4 www.targus.com/support.asp

Technical Support


For technical questions, please visit:
Internet: www.targus.com/support.asp

Warranty

Targus warrants this product to be free from defects in materials and workmanship for one year. If your Targus accessory is found to be defective within that time, we will promptly repair or replace it. This warranty does not cover accidental damage, wear and tear, or consequential or incidental loss. Under no conditions is Targus liable for loss of, or damage to a computer; nor loss of, or damage to, programs, records, or data; nor any consequential or incidental damages, even if Targus has been informed of their possibility. This warranty does not affect your statutory rights.

Regulatory Compliance

This device complies with Part 15 of the FCC Rules. Operation is subject to the following two conditions: (1) This device may not cause harmful interference, and (2) This device must accept any interference received, including interference that may cause undesired operation.

 **Over-Current Protection** : THE USB PORTS ARE PROTECTED. WHEN THERE IS EXCESSIVE POWER DRAW FROM A DEVICE, THE OVER-CURRENT PROTECTION WILL DISCONNECT POWER FROM ALL PORTS AND THE LED GOES OFF. IF THERE IS A POP-UP WINDOW, "USB HUB CURRENT LIMIT EXCEEDED", PLEASE CLICK **Reset** TO RESUME WORK OR YOU CAN RESET THE HUB BY UNPLUGGING THE USB CABLE AND PLUGGING IT BACK IN.

FCC Statement Tested to Comply

This equipment has been tested and found to comply with the limits of a Class B digital device, pursuant to Part 15 of the FCC Rules. These limits are designed to provide reasonable protection against harmful interference in a residential installation. This equipment generates, uses, and can radiate radio frequency energy and if not installed and used in accordance with the instructions, may cause harmful interference to radio communications. However, there is no guarantee that interference will not occur in a particular installation.

If this equipment does cause harmful interference to radio or television reception, which can be determined by turning the equipment off and on, the user is encouraged to try to correct the interference by one or more of the following measures:

- Reorient or relocate the receiving antenna;
- Increase the separation between the equipment and receiver;
- Move the computer away from the receiver;
- Connect the equipment into an outlet on a circuit different from that to which the receiver is connected.